

FORUM Viewer Overview

enter any part of name or ID

'today' filter - click to remove

clear search

advanced search

refresh screen

search filter

visit dates

exams

selected patient

blue border indicates selected document


double click to view all selected documents

OCT raw data icon (cube) - can't be viewed in FORUM


to use Cirrus Review, right click on the cube icon


Patient Name	Patient ID	Visit Date	Type	Device	Laterality	Number Of Documents
DEMO FGW, CR01	AA	Jan 1...	Jun 28, 2009	SFA	FORUM Glaucoma Wo... L	1
DEMO FGW, CR02 FI	CC	Jan 1...	Jun 27, 2009	SFA	FORUM Glaucoma Wo... R	1
DEMO FGW, CR03	7083...	Jun 1...	Jun 27, 2009	OVERVIEW_O24_2_3...	FORUM Glaucoma Wo... R	1
DEMO FGW, CR04 Nor...	7094...	Feb ...	Jun 27, 2009	OD Ganglion Cell OU ...	CIRRUS HD-OCT 4000 R	1
DEMO FGW, CR05	56464	Jul 1...	Jun 27, 2009	COMBINED_REPORT	FORUM Glaucoma Wo... B	2
DEMO FGW, CR06	CZMI...	Jan 1...	Jun 28, 2009	COLOR	CX-1 R	2
DEMO FGW, VF01	7.355...	Apr 1...	Jun 27, 2009	Cirrus_OU_ONH and ...	CIRRUS HD-OCT 4000 B	1
DEMO FGW, VF02	7.432...	Oct 2...	Jun 27, 2009	CIRRUS HD-OCT 400...	CIRRUS HD-OCT 4000 L	3
DEMO FGW, VF03	3.245...	Sep ...	Jun 27, 2009	CIRRUS HD-OCT 400...	CIRRUS HD-OCT 4000 R	4

Find a Patient

By default the patient list is filtered by patients who have had an examination 'today'. Click the  (Today) button to remove the filter.

To search for a patient enter the surname name or ID.

An advanced search can be performed by clicking on the  (Extended Search) button.

Remove all search filters by clicking on the  button.

Selecting a Patient

Click on the patient name to select them. All the visit dates will be displayed for the highlighted patient. The examination procedures for the selected visit are also displayed along with the thumbnails.

Multiple visits can be selected by clicking on a visit and dragging the mouse up or down.

Alternatively, individual visits can be selected by holding the 'Ctrl' key and clicking on the required visits. The list of examination procedures and thumbnails is updated accordingly.


Viewing an Image/Report

Images and/or reports can be highlighted by clicking on the thumbnail; selected images will have a blue border.

To view the selected images, double click on one of them. To enlarge an image/report double click on it.

Double click again to (go back) view all the selected images.

Use the mouse wheel to zoom in and out.

Click the  (Panning mode) button then click (on the image) and drag the mouse button to pan around the image.

Depress the 'Shift' key then click (on the image) and drag the mouse to adjust brightness and contrast.

Creating a Worklist/Order

You can send patients details to the connected instruments by creating an Order. You can send an order to all or specific instruments.

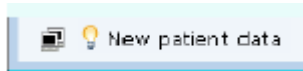
To create an Order, find the patient then right click on their name, a new menu will appear. Click on 'Create Automatic Order' to send the patient details to all connected instruments, or click 'Create Automatic Order for...' then select the specific instrument.


Registering a New Patient

From the Menu bar, select 'Patient' then 'Patient Administration'. Click the 'New Patient' button; the required fields are highlighted in red.

Tips and Tricks

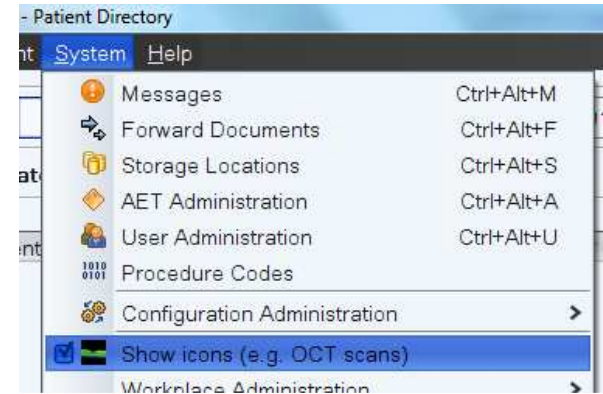
A light bulb will be displayed in the bottom left corner of the screen when new data has been received;



Click the  (refresh button) to refresh the screen/search results.

Enabling Cirrus Raw Data Icon

From the Menu bar, select System then tick 'Show icons'



Keyboard Shortcuts

Ctrl+Alt+Y	Patient directory
Ctrl+Alt+D	Document display
Ctrl+Alt+P	Patient administration
Ctrl+R	Clear all search filters
Ctrl+F	Advanced search
Ctrl+"-"	Zoom out (or use mouse wheel)
Ctrl+"+"	Zoom in (or use mouse wheel)
Shift+left mouse	Contrast (L & R), Brightness (U & D)
Delete	Remove selected image from view
Ctrl + A	Select all thumbnails
Ctrl + Shift + A	Deselect all thumbnails